

# THE MOTOR BAYS

BUILDING 129. SPACE TO LET



**BICESTER MOTION**

Bicester Motion, Skimmingdish Lane, Bicester OX27 8AL  
[bicestermotion.com](http://bicestermotion.com)

# BUILDING SPEC.

Join a globally recognised centre of excellence where like-minded automotive, motorsport and mobility technologies thrive and deliver the solutions that society needs for tomorrow. Bicester Motion offers a workspace for every ambition: from contemporary offices and R&D labs to workshops and showrooms.

## The Motor Bays Key Facts:

- Prime location, in the Motor Transport Yard, off the Main Avenue.
- The 'MT Yard' is the unofficial heart of the site, forming a natural amphitheater at Scramble events.
- Fitted, open plan area with full glass frontage doors enabling the perfect opportunity to showcase.
- The unit has a self-contained kitchen and WC.
- Connected reception/office area.

## Accommodation

Measurements are provided on a gross internal area (GIA) basis: 129 - Motor Bays | 1,200 sq ft | 111.5 sq m

## Services

Mains electricity, water and drainage are connected.

These services have not been tested by the Agents.

## Leasehold

The properties are available by way of a new fully repairing and insuring lease for a term to be agreed by negotiation.

## Rent

£38,400 plus VAT pa, exclusive of all other outgoings. Further details are available on request.

## Service Charge

The communal areas are managed and maintained by the Landlord via a service charge which the incoming occupier will be responsible for paying.



## Insurance

The Landlord insures the building and recovers the premium from the Tenant.

## Business Rates

Please contact the VOA for more information.

## VAT

All terms quoted are exclusive of VAT which is payable.

## Legal Costs

Each party to bear their own legal costs incurred in this transaction.

## Subject to Contract

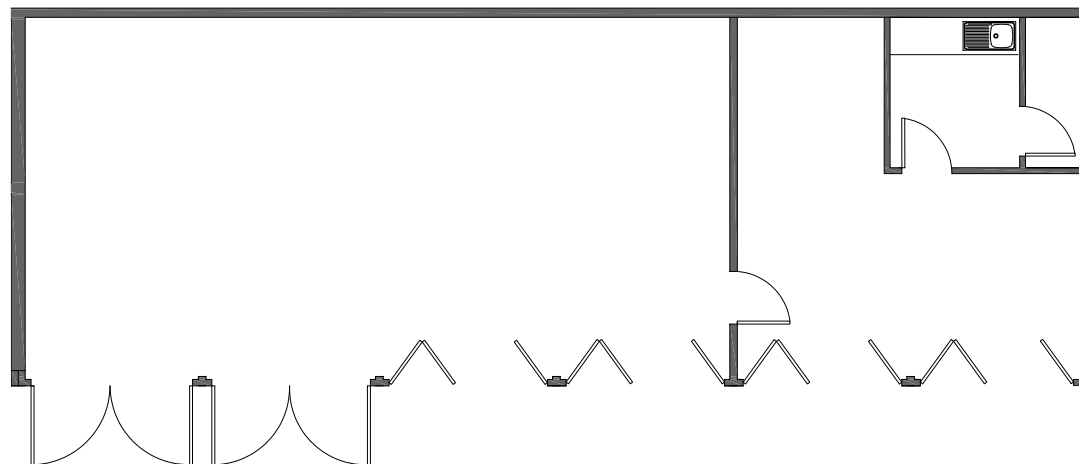


# THE SPACE.

BUILDING TOTAL

**1200**  
SQUARE FEET

**111.5**  
SQUARE METRES







**150,000+** visitors per annum



**3** on-site barista cafes



**444** acre campus with green space



**3** iconic Scramble events per annum



**50+** businesses already thriving on site



**1** exceptional opportunity





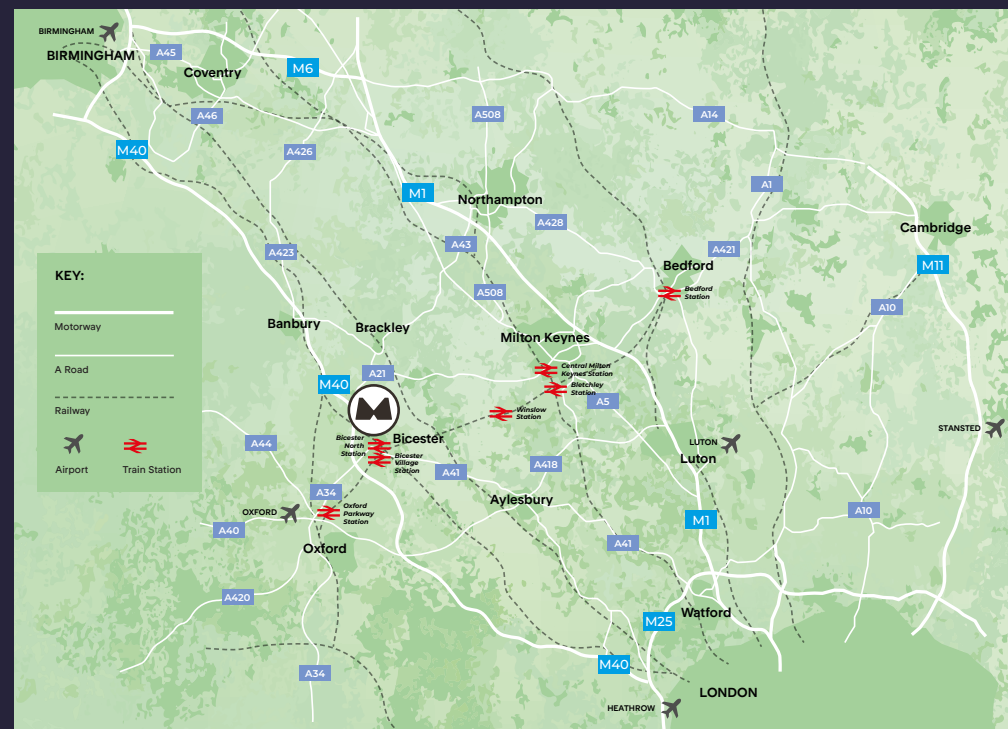
**Perfectly located, with transport links via road, rail and air, Bicester Motion is a hub in every way.**

Being based at Bicester Motion not only enhances your appeal to new talent but also connects your business to a uniquely diverse mix of sectors. Within a 50-mile radius, you'll find **70% of the world's Formula One teams**, and the site sits at the heart of the **Oxford–Cambridge Arc** — a hub for world-leading research, innovation and technology. The estate itself is home to forward-thinking companies driving collaboration, economic growth and sustainable development.

**Quite simply, there's nowhere else like it in the world.**

	OXFORD	SILVERSTONE	BIRMINGHAM	LONDON	OXFORD ✈	LUTON ✈	HEATHROW ✈
🚆	<b>15</b> MINUTES	<b>90</b> MINUTES	<b>90</b> MINUTES	<b>50</b> MINUTES	<b>65</b> MINUTES	<b>170</b> MINUTES	<b>100</b> MINUTES
🚗	<b>30</b> MINUTES	<b>25</b> MINUTES	<b>70</b> MINUTES	<b>100</b> MINUTES	<b>25</b> MINUTES	<b>65</b> MINUTES	<b>50</b> MINUTES
📍	<b>15</b> MILES	<b>18</b> MILES	<b>62</b> MILES	<b>64</b> MILES	<b>12</b> MILES	<b>44</b> MILES	<b>52</b> MILES

*\* All travel times are approximate and depend on traffic, train timetables and connections.*



# BETTER CONNECTIONS.





**JAMES HILL**  
james.hill@adaltareal.com  
07909 917 456



**GEORGE BROWN**  
george.brown@savills.com  
07811 901 158



**BICESTER MOTION**

Bicester Motion, Skimmingdish Lane, Bicester OX27 8AL  
**bicestermotion.com**

**Viewings.** Strictly by appointment only, please contact us or one of our agents. **Terms.** Upon application

Misrepresentations Act 1967 – Whilst all the information in this brochure is believed to be correct, neither the agent nor the client guarantee its accuracy nor is it intended to form any part of any contract. All areas quoted are approximate. Nov 2025.